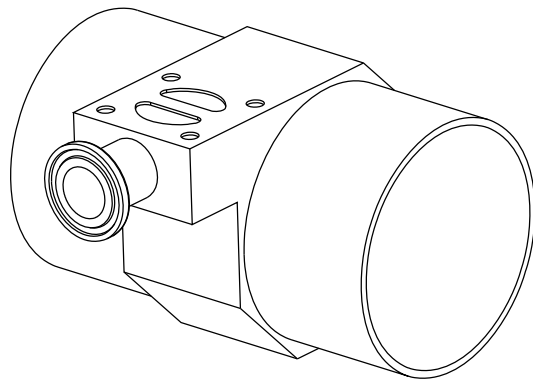
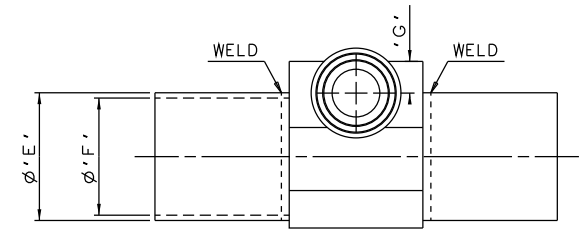
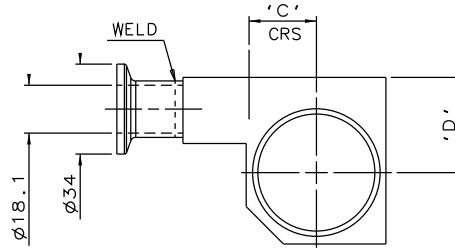
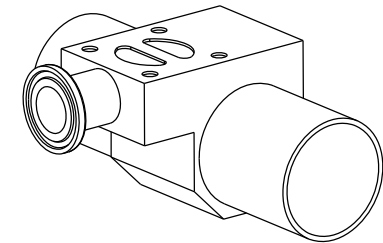
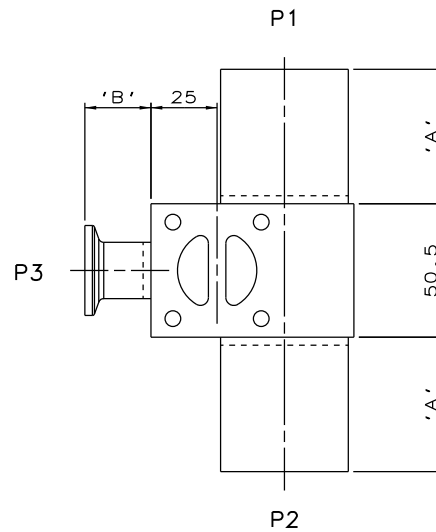


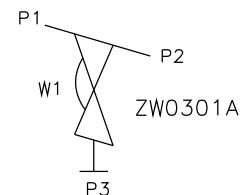
DN15 MAINLINE ONLY



DN65 TO DN100
MAINLINE ONLY



DN20 TO DN50
MAINLINE ONLY



ORIENTATION AS PER
P&ID DIAGRAM FOR
OPTIMUM DRAINABILITY.

MAINLINE SIZE mm	A mm	B mm	C mm	D mm	ØE mm	ØF mm	G mm	BODY WEIGHT Kgs
DN15	50.8	25.0	12.1	23.5	21.3	18.1	12.7	0.7
DN20	50.8	25.0	15.2	26.0	26.9	23.7	13.0	0.6
DN25	50.8	25.0	18.2	30.0	33.7	29.7	12.7	0.8
DN32	50.8	25.0	22.2	34.0	42.4	38.4	12.7	1.0
DN40	50.8	25.0	25.5	36.0	48.3	44.3	12.7	1.0
DN50	50.8	25.0	30.7	40.0	60.3	55.1	12.7	1.5
DN65	50.8	25.0	38.5	44.0	76.1	70.9	12.7	1.6
DN80	50.8	25.0	45.2	47.0	88.9	83.7	13.7	1.7
DN100	101.6	25.0	57.9	60.2	114.3	109.1	12.7	2.9

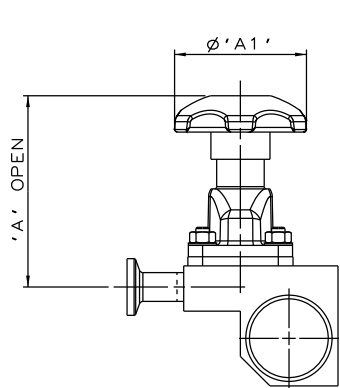
The information on this sheet is Private and Confidential and is the property of Crane Process Flow Technologies Limited and must not be published directly or indirectly in any manner whatsoever without the written permission of the Company and must not be used in any way detrimental to their interests.
© Crane Process Flow Technologies

CRANE Process Flow Technologies
A Crane Co. Company

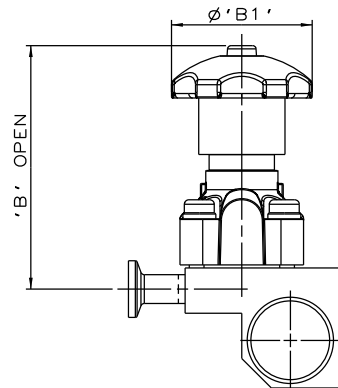
Saunders
The Science Inside

Title
SCHEDULE OF LEADING DIMENSIONS FOR DN15
WEIR 'T' BODY COMPLETE WITH
MAINLINE : ISO 1127 S1 BUTT WELD ENDS
BRANCH : DN15 HYGIENIC CLAMP END WITH ISO 1127 S1 BORE

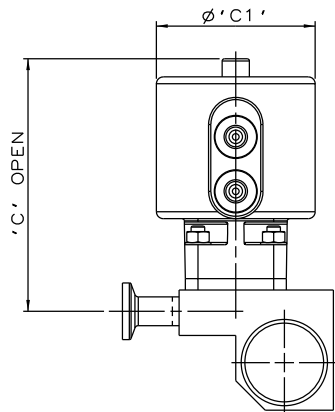
Drawn JRD	Date 13.10.11	UNCONTROLLED IN HARD COPY FORMAT	
Checked RND	Date 22.03.12		
First Angle Projection Method E	DO NOT SCALE	Drawing No. WEB-083	Issue. 2



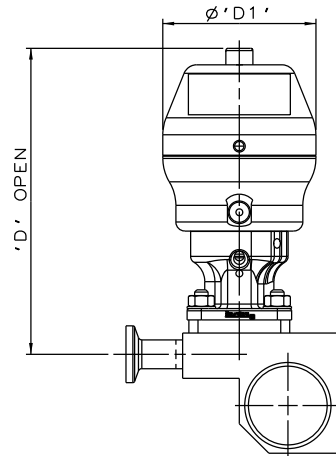
SS NON SEALED
BONNET ASSEMBLY



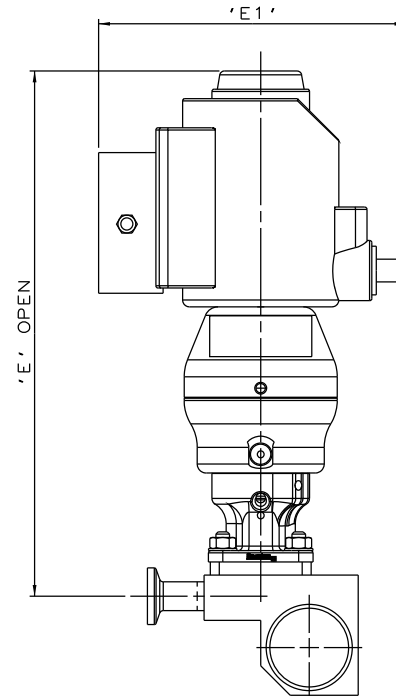
PES BONNET
ASSEMBLY



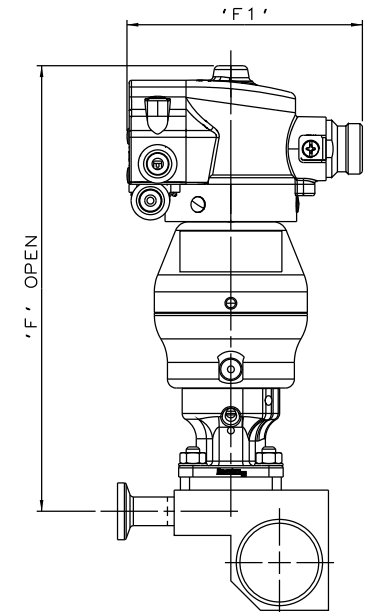
EC ACTUATOR
(ALL MODES)



*S360 ACTUATOR



*S360 ACTUATOR
WITH I-VUE SENSOR



*S360 ACTUATOR
WITH M-VUE SENSOR

The information on this sheet is Private and Confidential and is the property of Crane Process Flow Technologies Limited and must not be published directly or indirectly in any manner whatsoever without the written permission of the Company and must not be used in any way detrimental to their interests.
© Crane Process Flow Technologies

CRANE Process Flow Technologies
A Crane Co. Company

Saunders
The Science Inside

Title
SCHEDULE OF LEADING DIMENSIONS FOR DN15/0.50 WEIR
*T-BODY (DN15/0.50 BRANCH) WITH MAINLINE BUTT WELD ISO 1127 S1
ENDS. BRANCH HYGIENIC CLAMP END WITH ISO 1127 S1 BORE.
FITTED WITH TOPWORKS OPTIONS

Drawn RI	Date 09.05.17	UNCONTROLLED IN HARD COPY FORMAT
Checked RND	Date 09.05.17	
First Angle Projection Method E	DO NOT SCALE	Drawing No. WEB-083-ASSY
		Issue. 1

* DIMENSIONS SHOW MAXIMUM ENVELOPE FOR ALL MODES

BRANCH SIZE	A		A1		B		B1		C		C1		D		D1		E		E1		F		F1		
mm	inch	mm	inch	mm	inch	mm	inch	mm	inch	mm	inch	mm	inch	mm	inch	mm	inch	mm	inch	mm	inch	mm	inch	mm	inch
DN15	0.50	88.7	3.49	62.0	2.44	111.7	4.40	62.0	2.44	115.7	4.56	70.0	2.75	139.7	5.50	67.5	2.66	235.7	9.28	136.0	5.35	200.0	7.87	103.8	4.09